

## Time Magazine Names Holtec One of Ten Most Influential Energy Companies in the United States

We are pleased to note that, in its April 29, 2026 online issue, [Time Magazine named Holtec one of the ten most influential companies in the energy industry](#) and one of only two in the nuclear energy sector, alongside NextEra. Time's citation is reproduced below:

"Nuclear power's big test: As global energy demands rise, nuclear power is experiencing something of a renaissance. With a \$300 million state grant, a \$1.52 billion loan from the Department of Energy, and a 30-year power purchase agreement from two cooperatives, Holtec International has spent the last several years working to bring Michigan's dormant Palisades nuclear plant back online----- This would make Palisades the first U.S. nuclear plant to whirr back to life after being decommissioned. And with at least two other shuttered nuclear plants looking to follow suit, the energy industry is watching Holtec's progress closely for clues about the feasibility of our nuclear future."

Patrick O'Brien, Holtec's Corporate Director of Government Affairs and Communications commented, "We are pleased to report that the Palisades restart program cited by Time has reached a watershed moment. All major modifications—of which there were many—are essentially complete, and only the routine but voluminous bulk work remains. We expect that work to be finished in time to pave the way for the plant's reconnection to the grid later this year."

The Palisades restart project cited by Time offers a compelling demonstration of Holtec's fully integrated, turnkey capabilities, precisely the breadth of expertise required to execute the world's first nuclear plant restart. The project has called for excellence across the full spectrum of nuclear execution: design, engineering, licensing, regulatory engagement, fabrication, construction, site services, and commissioning. Restarting Palisades has required Holtec to bring all of these disciplines together in a coordinated way to meet the demands of a highly complex undertaking.

An area of Holtec's strength that is too seldom discussed is its nuclear construction capability. The photos below highlight active site work at a nuclear plant, reflecting the company's hands-on expertise in the field. Holtec's design, engineering, and construction of ISFSI pads, including at sites with challenging liquefaction conditions, demonstrate a rare ability to pair innovative engineering with advanced nuclear construction execution. This



From TIME ©2026 TIME USA LLC. All rights reserved. Used under license.

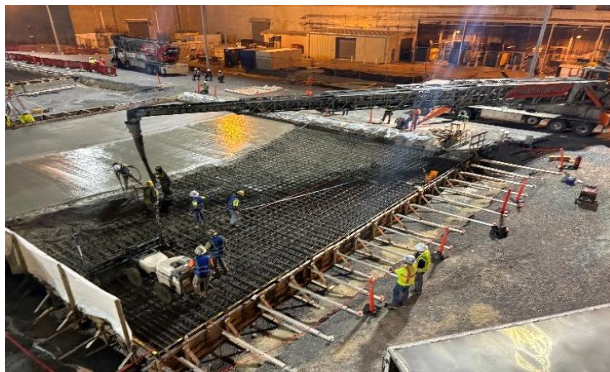


For more information, please contact: Patrick O'Brien, Director of Government Affairs and Communications

Phone: (508) 494-4254 | Email: [p.obrien@holtec.com](mailto:p.obrien@holtec.com)

integrated capability is particularly critical in international markets, where Holtec stands apart among U.S. companies with a fully unified platform spanning design, engineering, licensing, fabrication, construction, plant ownership, and long-term project delivery.

Commenting on the latest achievement of the Company's construction organization, Holtec's newly installed President, Dr. Rick Springman, said, "We are committed to maintaining full-spectrum capabilities infused with relentless innovation to serve the industry and play our role in sustaining the rise of nuclear in our country and beyond."



*ISFSI Concrete Placement*



*ISFSI Concrete Pad*

