



US009208914B2

(12) **United States Patent**
Singh et al.

(10) **Patent No.:** **US 9,208,914 B2**

(45) **Date of Patent:** **Dec. 8, 2015**

(54) **SYSTEM, METHOD AND APPARATUS FOR PROVIDING ADDITIONAL RADIATION SHIELDING TO HIGH LEVEL RADIOACTIVE MATERIALS**

USPC 250/506.1, 507.1, 515.1, 517.1, 518.1
See application file for complete search history.

(56) **References Cited**

U.S. PATENT DOCUMENTS

3,229,096 A 1/1966 Bonilla et al.
3,414,727 A 12/1968 Bonilla

(Continued)

FOREIGN PATENT DOCUMENTS

DE 1257299 12/1967
DE 3144113 5/1983

(Continued)

OTHER PUBLICATIONS

International Atomic Energy Agency (IAEA), "Multi-Purpose Container Technologies for Spent Fuel Management," IAEA-TECDOC-1192, Dec. 2000.

Primary Examiner — Michael Maskell

(74) *Attorney, Agent, or Firm* — The Belles Group, P.C.

(57) **ABSTRACT**

A system, method and apparatus for providing radiation shielding to a ventilated cask for holding high level radioactive materials. In one aspect, the tubular shell is positioned to circumferentially surround the cask so that an annular gap exists between the tubular shell and a sidewall of the cask. The tubular shell includes a first air flow inlet and a second air flow inlet. An air flow barrier is placed within the annular gap, separating the annular gap into a first chamber and a second chamber. A first air flow into the first air flow inlet passes through the first chamber and into the inlet vent of the cask, a second air flow into the second air flow inlet passes through the second chamber and to an opening at the top end of the tubular shell, and the air flow barrier prohibits cross-flow of air between the first and second chambers.

19 Claims, 7 Drawing Sheets

(71) Applicant: **Holtec International, Inc.**, Marlton, NJ (US)

(72) Inventors: **Krishna P. Singh**, Hobe Sound, FL (US); **Stephen J. Agace**, Voorhees, NJ (US); **Stefan Anton**, Southampton, NJ (US)

(73) Assignee: **HOLTEC INTERNATIONAL**

(*) Notice: Subject to any disclaimer, the term of this patent is extended or adjusted under 35 U.S.C. 154(b) by 0 days.

(21) Appl. No.: **14/674,051**

(22) Filed: **Mar. 31, 2015**

(65) **Prior Publication Data**

US 2015/0243391 A1 Aug. 27, 2015

Related U.S. Application Data

(63) Continuation of application No. 12/940,804, filed on Nov. 5, 2010, now Pat. No. 8,995,604.

(60) Provisional application No. 61/258,240, filed on Nov. 5, 2009.

(51) **Int. Cl.**

G21K 1/00 (2006.01)

G21F 5/10 (2006.01)

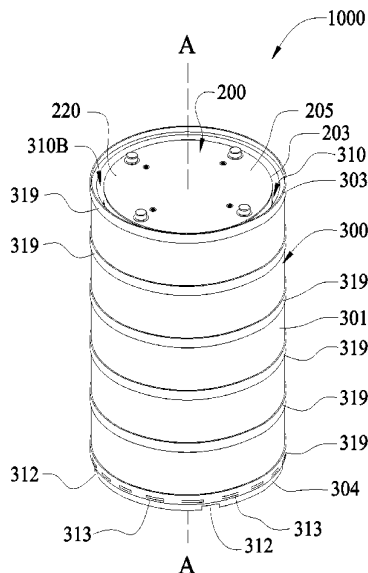
G21F 5/002 (2006.01)

(52) **U.S. Cl.**

CPC . **G21F 5/10** (2013.01); **G21F 5/002** (2013.01)

(58) **Field of Classification Search**

CPC G21F 5/10; G21F 5/002



(56)

References Cited

U.S. PATENT DOCUMENTS

3,536,134 A 10/1970 Staub et al.
 3,669,299 A 6/1972 Jones et al.
 3,765,549 A 10/1973 Jones
 3,780,306 A 12/1973 Anderson et al.
 3,845,315 A 10/1974 Blum
 3,877,515 A 4/1975 Laing
 3,886,368 A 5/1975 Rollins et al.
 3,910,006 A 10/1975 James
 3,917,953 A 11/1975 Wodrich
 3,962,587 A 6/1976 Dufrane et al.
 3,982,134 A 9/1976 Housholder et al.
 4,069,923 A 1/1978 Blumenau et al.
 4,099,554 A 7/1978 Haese
 4,147,938 A 4/1979 Heckman et al.
 4,197,467 A 4/1980 Williams
 4,288,698 A 9/1981 Baatz et al.
 4,336,460 A 6/1982 Best et al.
 4,366,095 A 12/1982 Takats et al.
 4,450,134 A 5/1984 Soot et al.
 4,498,011 A 2/1985 Dyck et al.
 4,527,066 A 7/1985 Dyck et al.
 4,532,104 A 7/1985 Wearden et al.
 4,535,250 A 8/1985 Fields
 4,634,875 A 1/1987 Kugeler et al.
 4,636,645 A 1/1987 Kessinger
 4,666,659 A 5/1987 Lusk et al.
 4,672,213 A 6/1987 Stoll et al.
 4,711,758 A 12/1987 Machado et al.
 4,738,388 A 4/1988 Bienek et al.
 4,749,520 A 6/1988 Meininger et al.
 4,770,844 A 9/1988 Davis, Jr.
 4,780,268 A 10/1988 Papai et al.
 4,780,269 A 10/1988 Fischer et al.
 4,800,062 A 1/1989 Craig et al.
 4,800,283 A 1/1989 Efferding
 4,827,139 A 5/1989 Wells et al.
 4,834,916 A 5/1989 Chaudon et al.
 4,847,009 A 7/1989 Madle et al.
 4,914,306 A 4/1990 Dufrane et al.
 4,926,046 A 5/1990 Roy et al.
 4,935,943 A 6/1990 Schweitzer et al.
 4,972,087 A 11/1990 Neider et al.
 5,063,299 A 11/1991 Efferding
 5,102,615 A 4/1992 Grande et al.
 5,232,657 A 8/1993 Kovacik et al.
 5,245,641 A 9/1993 Machado et al.
 5,373,540 A 12/1994 Decooman, Sr. et al.
 5,391,887 A 2/1995 Murray, Jr.
 5,406,600 A 4/1995 Jones et al.
 5,406,601 A 4/1995 Hinderer et al.
 5,438,597 A 8/1995 Lehnert et al.
 5,513,232 A 4/1996 Jones et al.
 5,546,436 A 8/1996 Jones et al.
 5,564,498 A 10/1996 Bochard
 5,612,543 A 3/1997 Wenner et al.
 5,641,970 A 6/1997 Taniuchi et al.
 5,643,350 A 7/1997 Mason et al.
 5,646,971 A 7/1997 Howe
 5,651,038 A 7/1997 Chechelnitzsky et al.
 5,661,768 A 8/1997 Gilligan, III et al.
 5,668,843 A 9/1997 Wasinger
 5,720,789 A 2/1998 Pinson
 5,848,111 A 12/1998 Wells et al.
 5,898,747 A 4/1999 Singh
 5,946,639 A 8/1999 Hess

6,064,710 A 5/2000 Singh
 6,064,711 A 5/2000 Copson
 6,252,923 B1 6/2001 Iacovino et al.
 6,323,501 B1 11/2001 White et al.
 6,489,623 B1 12/2002 Peters et al.
 6,519,307 B1 2/2003 Singh et al.
 6,548,029 B1 4/2003 Towler et al.
 6,587,536 B1 7/2003 Singh et al.
 6,625,246 B1 9/2003 Singh et al.
 6,718,000 B2 4/2004 Singh et al.
 6,793,450 B2 9/2004 Singh et al.
 6,848,223 B2 2/2005 Singh et al.
 6,853,697 B2 2/2005 Singh et al.
 7,068,748 B2 6/2006 Singh
 7,096,600 B2 8/2006 Singh
 7,139,358 B2 11/2006 Singh et al.
 7,210,247 B2 5/2007 Singh
 7,330,525 B2 2/2008 Singh et al.
 7,330,526 B2 2/2008 Singh
 7,590,213 B1 9/2009 Singh
 7,676,016 B2 3/2010 Singh
 7,707,741 B2 5/2010 Singh
 7,715,517 B2 5/2010 Singh et al.
 7,786,456 B2 8/2010 Singh et al.
 7,820,870 B2 10/2010 Singh et al.
 8,995,604 B2 3/2015 Singh et al.
 2003/0076917 A1 4/2003 Georgii
 2005/0286674 A1 12/2005 Fischer et al.
 2006/0215803 A1* 9/2006 Singh 376/272
 2007/0104305 A1 5/2007 Veron
 2008/0265182 A1* 10/2008 Singh et al. 250/506.1
 2009/0069621 A1 3/2009 Singh et al.
 2009/0158614 A1 6/2009 Singh et al.
 2009/0159550 A1 6/2009 Singh et al.
 2009/0175404 A1 7/2009 Singh et al.
 2009/0252274 A1 10/2009 Singh
 2009/0278063 A1 11/2009 Forster
 2010/0150297 A1 6/2010 Singh
 2010/0212182 A1 8/2010 Singh
 2010/0232563 A1 9/2010 Singh et al.
 2010/0272225 A1 10/2010 Singh
 2010/0284506 A1 11/2010 Singh
 2011/0172484 A1 7/2011 Singh et al.
 2011/0255647 A1 10/2011 Singh
 2012/0093274 A1 4/2012 Cantonwine et al.

FOREIGN PATENT DOCUMENTS

DE 3403599 8/1985
 DE 3404666 8/1985
 DE 3515871 11/1987
 DE 3801550 7/1989
 DE 3933530 4/1991
 EP 253730 1/1988
 EP 314025 5/1989
 EP 561694 9/1993
 FR 2317737 2/1977
 FR 2471029 6/1981
 FR 2530065 1/1984
 GB 855420 11/1960
 GB 2104435 3/1983
 GB 2337722 12/1999
 JP 6116098 6/1986
 JP 62185199 8/1987
 JP 5209990 9/2009
 WO 9739454 10/1997

* cited by examiner

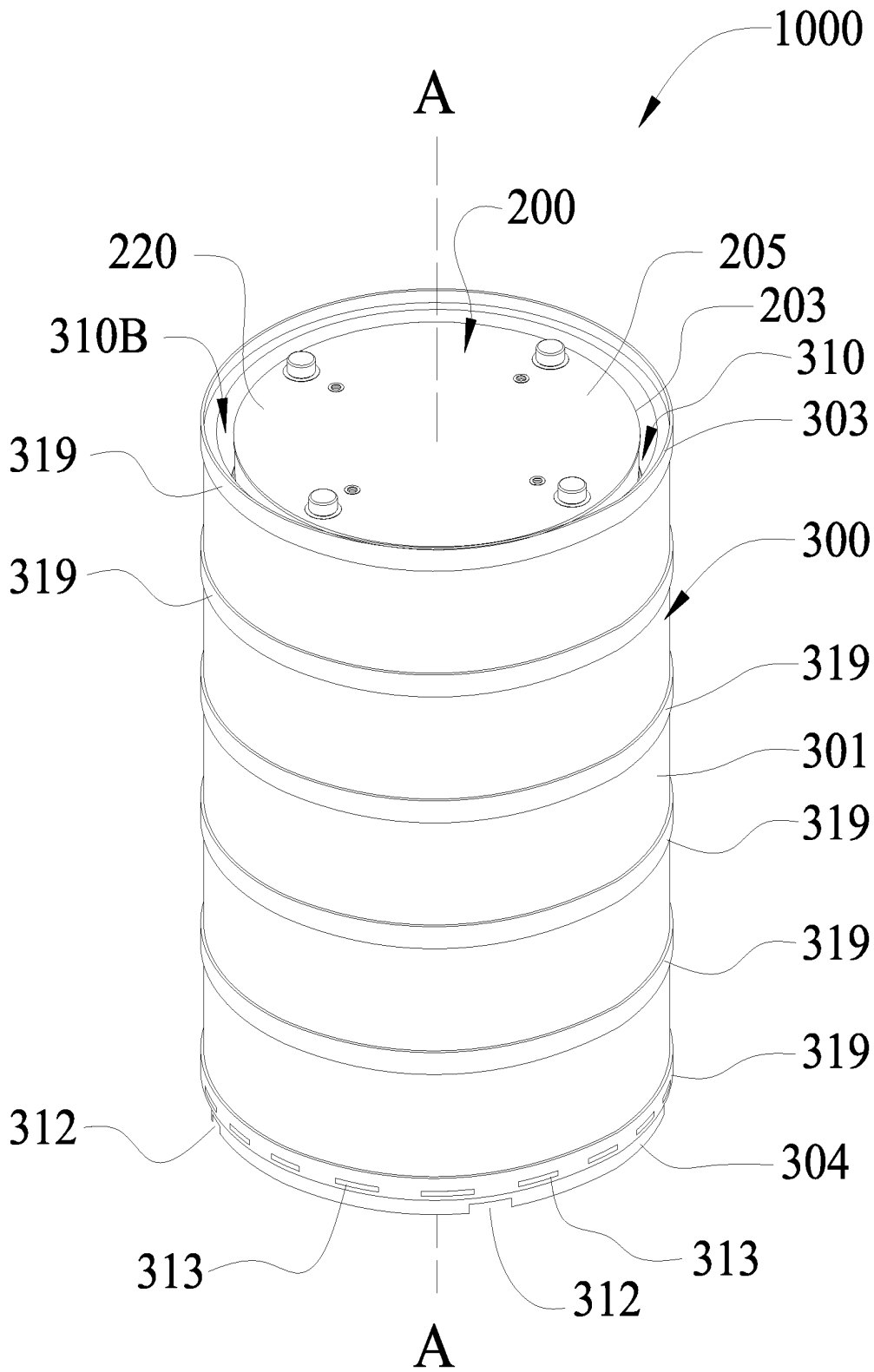


FIGURE 1

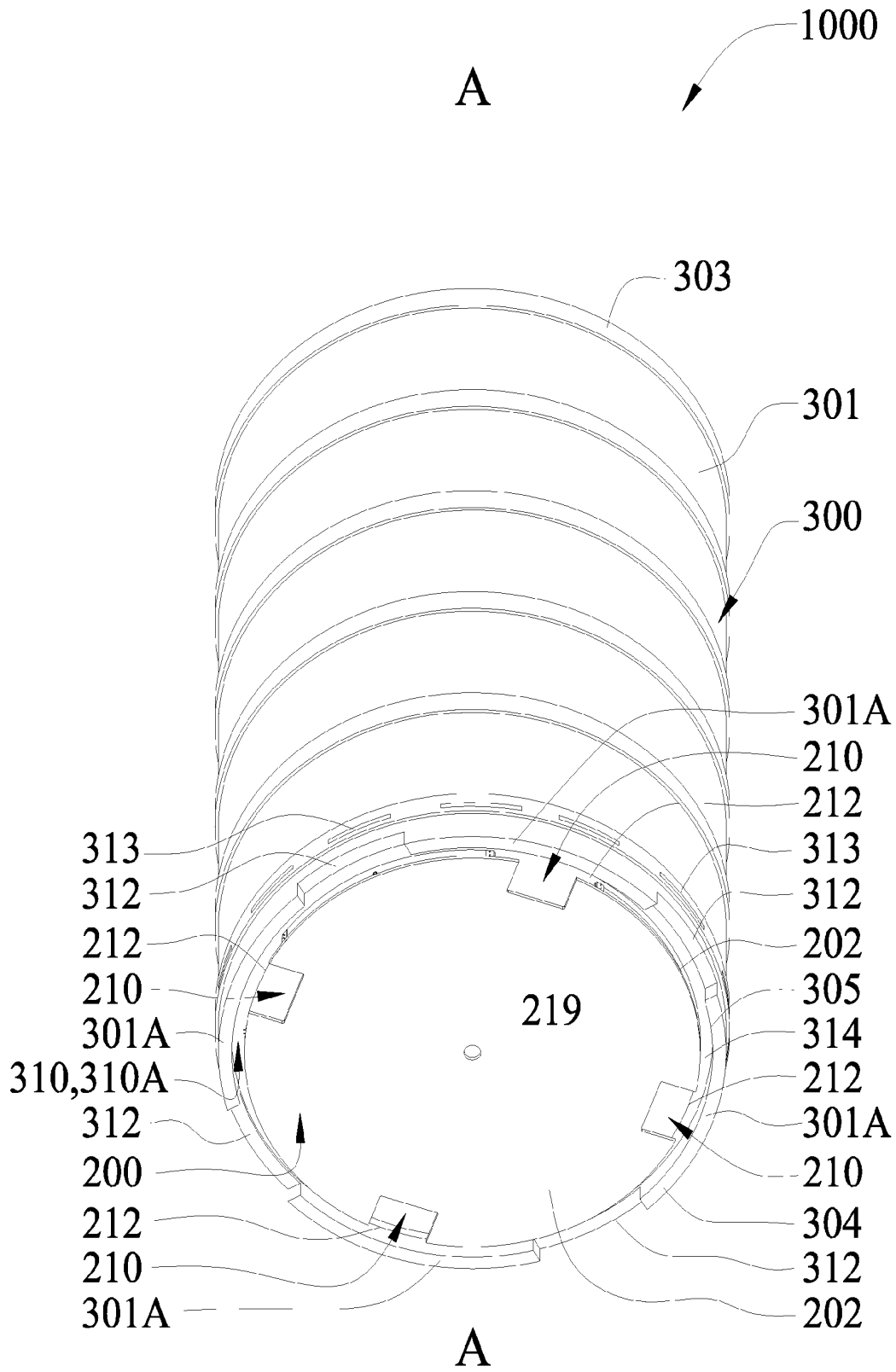


FIGURE 2

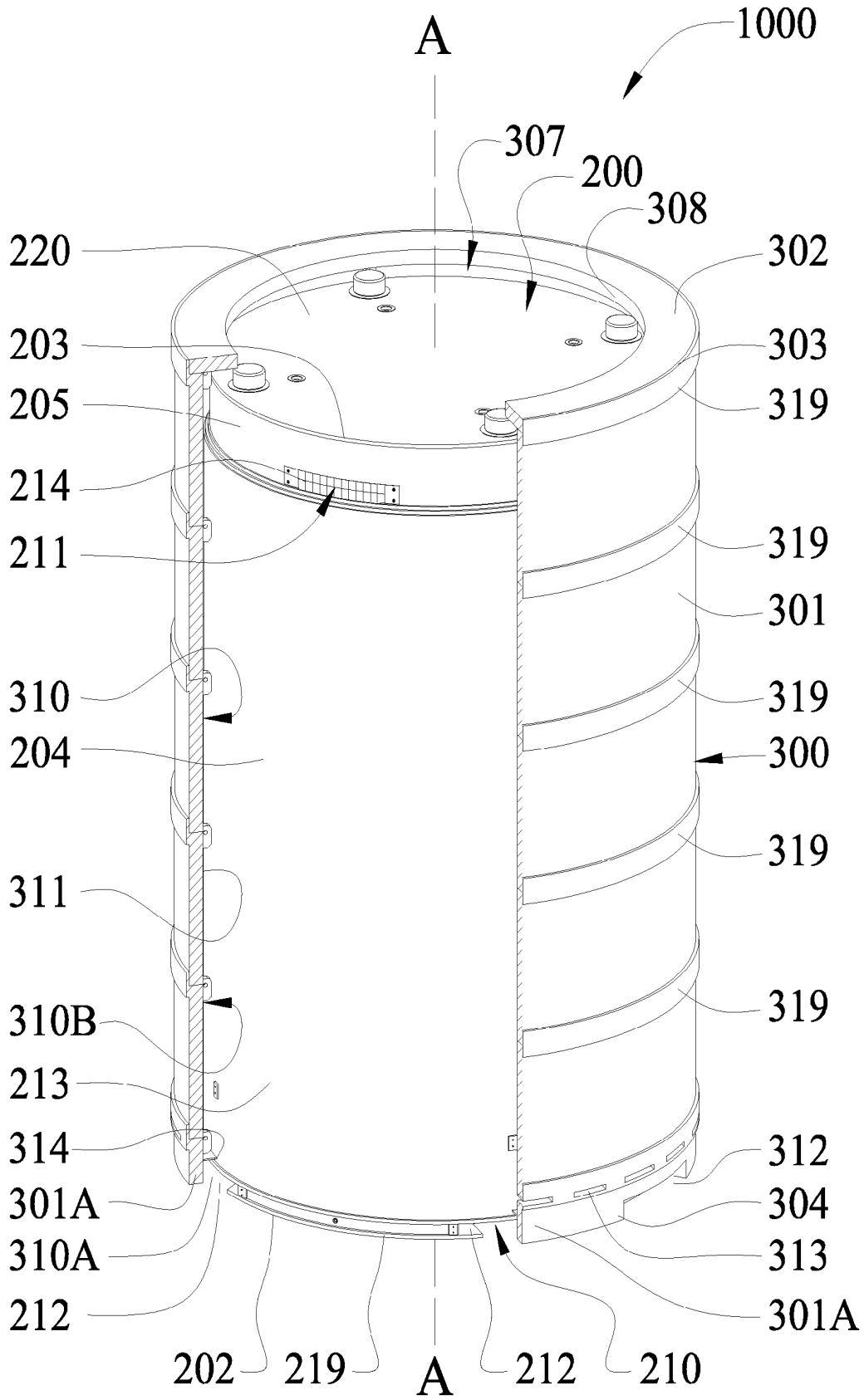


FIGURE 3

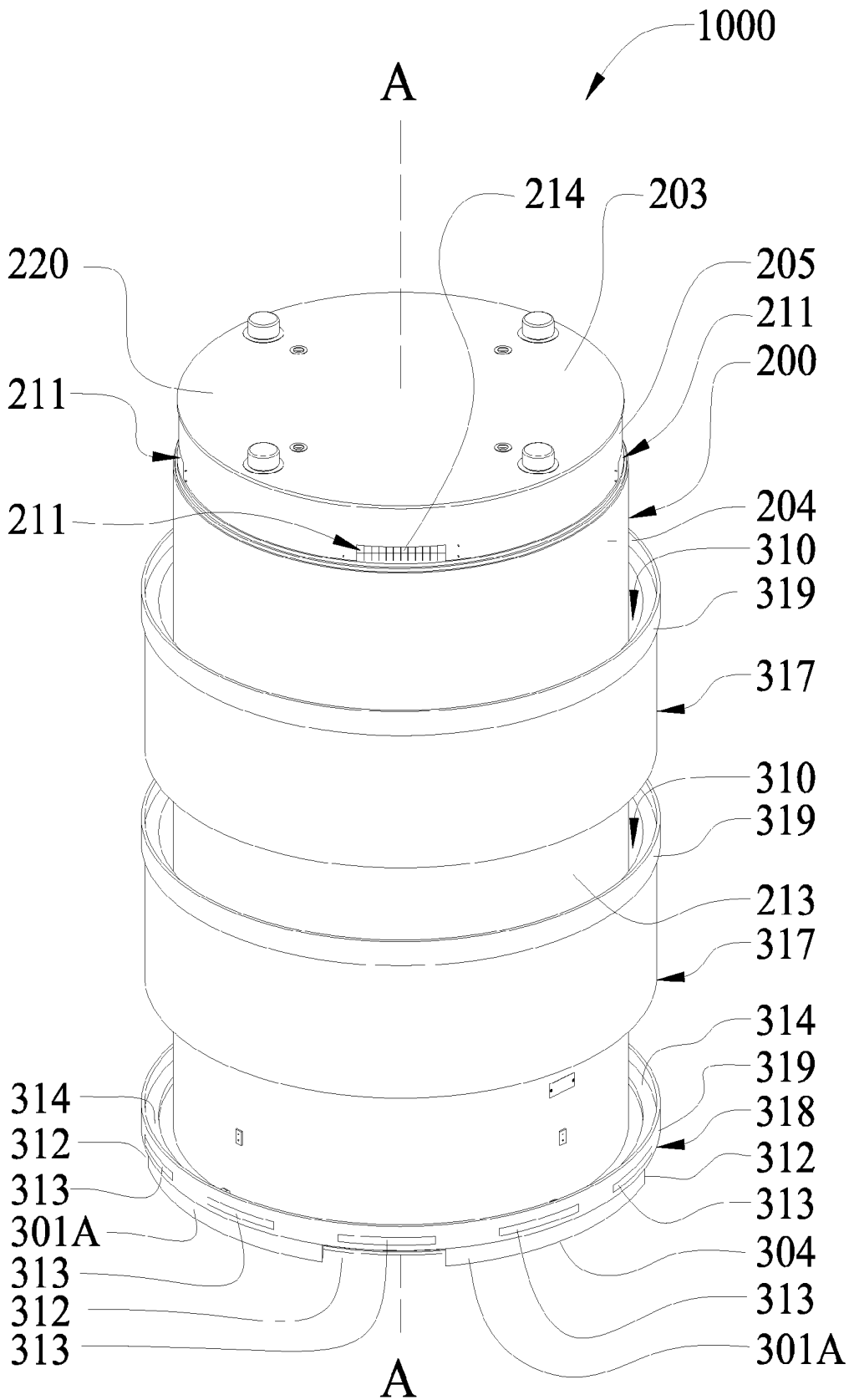


FIGURE 4

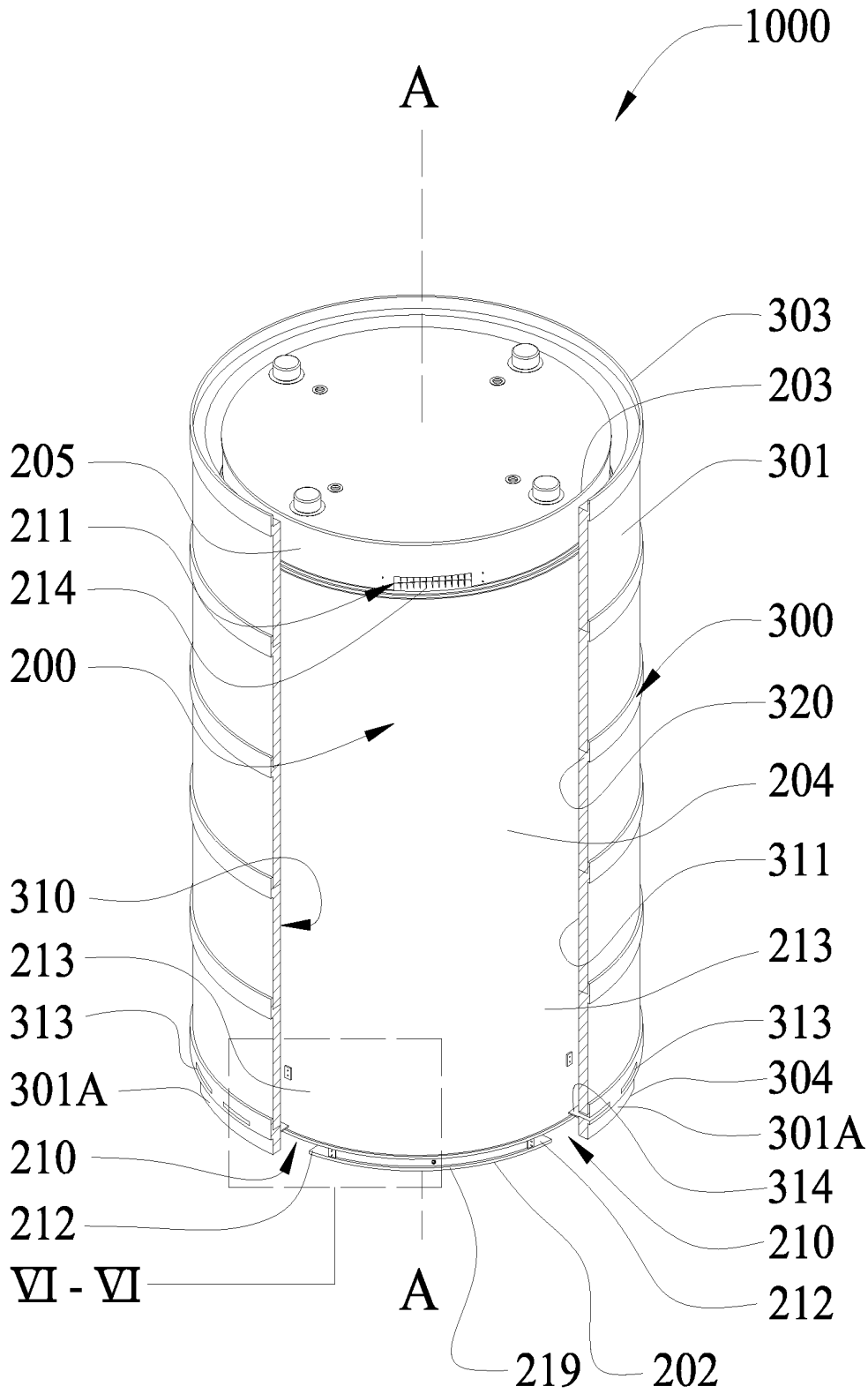


FIGURE 5

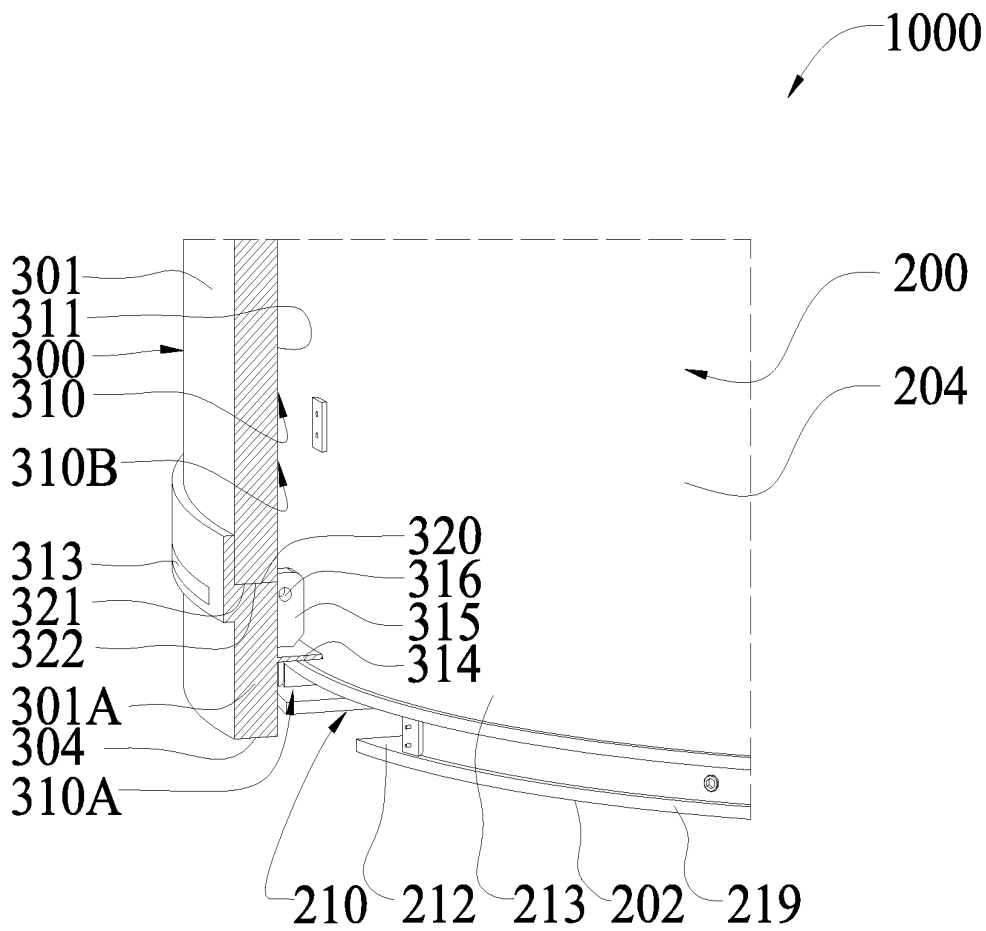


FIGURE 6

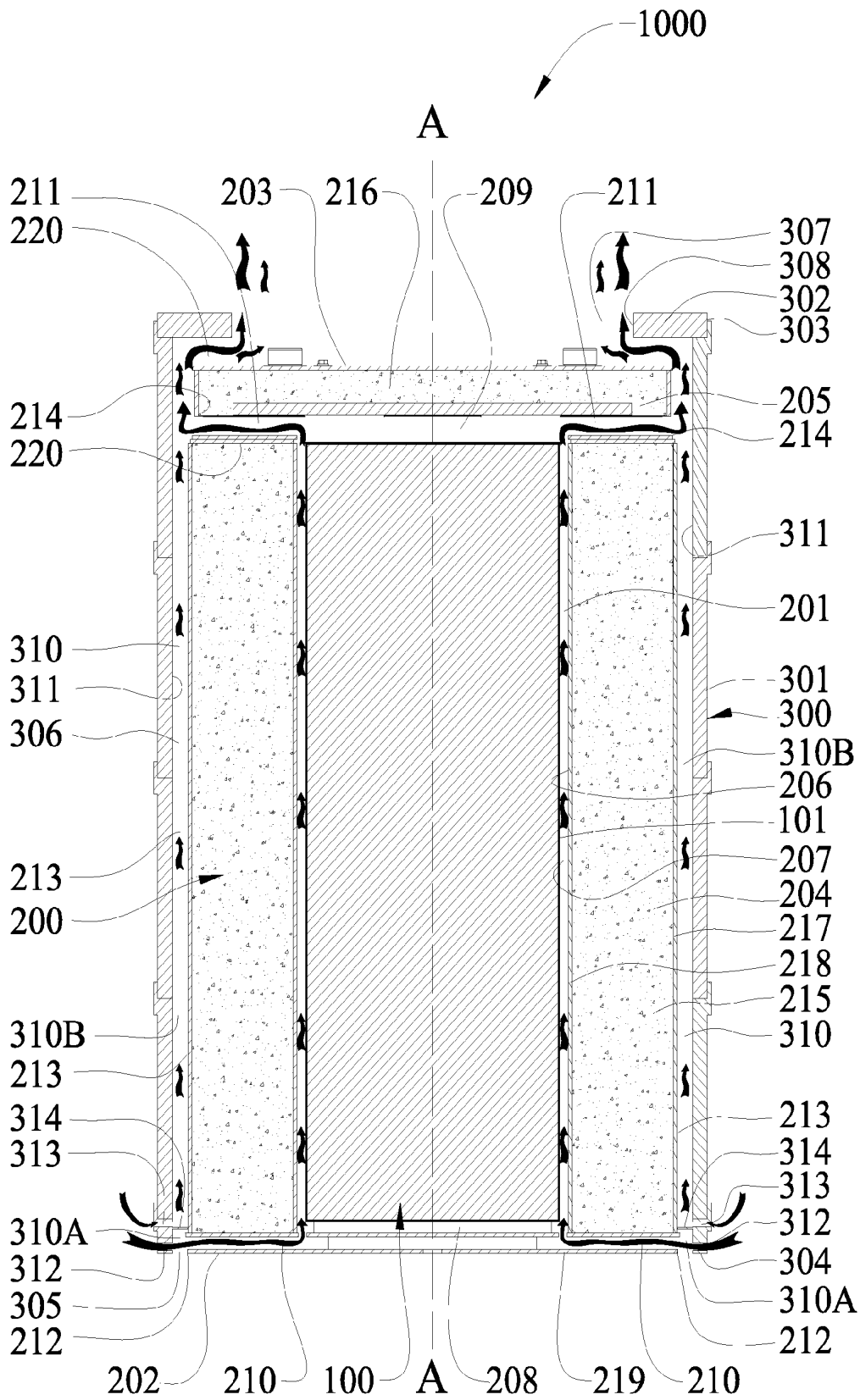


FIGURE 7

**SYSTEM, METHOD AND APPARATUS FOR
PROVIDING ADDITIONAL RADIATION
SHIELDING TO HIGH LEVEL RADIOACTIVE
MATERIALS**

CROSS-REFERENCE TO RELATED PATENT
APPLICATIONS

Priority is claimed as a continuation application to U.S. patent application Ser. No. 12/940,804, filed Nov. 5, 2010 and now U.S. Pat. No. 8,995,604, which claims priority to U.S. Provisional Application Ser. No. 61/258,240, filed Nov. 5, 2009. The disclosures of the aforementioned priority documents are incorporated herein by reference in their entireties.

FIELD

The present invention relates generally to the field of containing high level radioactive materials, and specifically to a system, apparatus and method that provides an ancillary for providing additional radiation shielding to a cask containing high level radioactive waste.

BACKGROUND

In the operation of nuclear reactors, the nuclear energy source is in the form of hollow zircaloy tubes filled with enriched uranium, typically referred to as fuel assemblies. When the energy in the fuel assembly has been depleted to a certain level, the assembly is removed from the nuclear reactor. At this time, fuel assemblies, also known as spent nuclear fuel, emit both considerable heat and extremely dangerous neutron and gamma photons (i.e., neutron and gamma radiation). Thus, great caution must be taken when the fuel assemblies are handled, transported, packaged and stored.

After the depleted fuel assemblies are removed from the reactor, they are placed in a canister. Because water is an excellent radiation absorber, the canisters are typically submerged under water in a pool. The pool water also serves to cool the spent fuel assemblies. When fully loaded with spent nuclear fuel, a canister weighs approximately 45 tons. The canisters must then be removed from the pool because it is ideal to store spent nuclear fuel in a dry state. The canister alone, however, is not sufficient to provide adequate gamma or neutron radiation shielding. Therefore, apparatus that provide additional radiation shielding are required during transport, preparation and subsequent dry storage.

The additional shielding is achieved by placing the canisters within large cylindrical containers called casks. Casks are typically designed to shield the environment from the dangerous radiation in two ways. First, shielding of gamma radiation requires large amounts of mass. Gamma rays are best absorbed by materials with a high atomic number and a high density, such as concrete, lead, and steel. The greater the density and thickness of the blocking material, the better the absorption/shielding of the gamma radiation. Second, shielding of neutron radiation requires a large mass of hydrogen-rich material. One such material is water, which can be further combined with boron for a more efficient absorption of neutron radiation.

There are generally two types of casks, transfer casks and storage casks. Transfer casks are used to transport spent nuclear fuel within the nuclear facility. Storage casks are used for the long term dry state storage. Guided by the shielding principles discussed above, storage casks are designed to be large, heavy structures made of steel, lead, concrete and an environmentally suitable hydrogenous material. However,

because storage casks are not typically moved, the primary focus in designing a storage cask is to provide adequate radiation shielding for the long-term storage of spent nuclear fuel.

One type of known storage cask is a ventilated vertical module ("VVM"). A VVM is a massive structure made principally from steel and concrete and is used to store a canister loaded with spent nuclear fuel. VVMs stand above ground and are typically cylindrical in shape and extremely heavy, weighing over 150 tons and often having a height greater than 16 feet. VVMs typically have a flat bottom, a cylindrical body having a cavity to receive a canister of spent nuclear fuel, and a removable top lid.

In using a VVM to store spent nuclear fuel, a container loaded with spent nuclear fuel, such as a multi-purpose canister ("MPC"), is placed in the cavity of the cylindrical body of the VVM. Because the spent nuclear fuel is still producing a considerable amount of heat when it is placed in the VVM for storage, it is necessary that this heat energy have a means to escape from the VVM cavity. This heat energy is removed from the outside surface of the MPC by ventilating the VVM cavity. In ventilating the VVM cavity, cool air enters the VVM chamber through bottom ventilation ducts, flows upward past the loaded MPC, and exits the VVM at an elevated temperature through top ventilation ducts. The bottom and top ventilation ducts of existing VVMs are located circumferentially near the bottom and top of the VVM's cylindrical body respectively.

While it is necessary that the VVM cavity be vented so that heat can escape from the MPC, it is also imperative that the VVM provide adequate radiation shielding and that the spent nuclear fuel not be directly exposed to the external environment. The inlet duct located near the bottom of the VVM is a particularly vulnerable source of radiation exposure to security and surveillance personnel who, in order to monitor the loaded VVMs, must place themselves in close vicinity of the ducts for short durations.

Existing VVMs are made of a dual metal shell structure with shielding concrete inside. The density of concrete can be increased in certain applications to the extent necessary to increase the dose attenuation. Increasing the density of concrete is an effective way to reduce dose. Calculations in specific cases show that increasing the density of concrete from 150 lb/cubic feet to 200 lb/cubic feet reduces the accreted dose from a VVM by a factor as high as 10. However, circumstances arise where it is desired to drive down the local area dose rate from one or more VVMs at an Independent Spent Fuel Storage Installation (ISFSI) to a value which is even smaller than that obtainable by using locally available high density concrete. Such a situation may arise, for example, if local or state authorities impose even more stringent dose rate limits than those specified in 10CFR72, or if there is an inhabited space (say, an office building) close to where the loaded casks are arrayed.

SUMMARY

The present invention is directed to an ancillary prismatic shell that can be positioned to circumscribe a vertical ventilated cask loaded with high level radioactive waste to reduce the radiation dose emitted to the environment, and a system incorporating the cask and the apparatus.

In one embodiment, the invention can be a system for containing high level radioactive materials comprising: a cask extending along a longitudinal axis and having an internal cavity for holding high level radioactive materials, the cask comprising at least one inlet vent at a bottom end of the

cask for allowing cool air to enter the internal cavity and at least one outlet vent at a top end of the cask for allowing heated air to exit the internal cavity; a tubular shell extending from a bottom end to a top end, the tubular shell positioned to circumferentially surround the cask in a spaced apart manner so that an annular gap exists between the tubular shell and a sidewall of the cask, the tubular shell comprising at least one primary aperture forming a passageway through the tubular shell and at least one secondary aperture forming a passageway through the tubular shell; and an air flow barrier extending between the tubular shell and the sidewall of the cask that separates the annular gap into: (1) a first chamber that forms a passageway between the primary aperture and the inlet vent of the cask; and (2) a second chamber that forms a passageway between the secondary aperture and an opening at the top end of the tubular shell, wherein cross-flow of air between the first and second chambers of the annular gap is prohibited by the air flow barrier.

In another embodiment, the invention can be a system for containing high level radioactive materials comprising: a cask extending along a longitudinal axis and having an internal cavity for holding high level radioactive materials, the cask comprising a plurality of inlet vents at a bottom end of the cask for allowing cool air to enter the internal cavity and a plurality of outlet vents at a top end of the cask for allowing heated air to exit the internal cavity; a tubular shell extending from a bottom end to a top end, the tubular shell positioned to circumferentially surround the cask in a spaced apart manner so that an annular gap exists between the tubular shell and a sidewall of the cask, the tubular shell comprising a plurality of primary apertures forming passageways through the tubular shell and a plurality of secondary apertures forming passageways through the tubular shell; and a flexible annular seal coupled to the tubular shell that separates the annular gap into: (1) an upper chamber that forms a passageway between the primary aperture and the inlet vent of the cask; and (2) a second chamber that forms a passageway between the secondary aperture and an opening at the top end of the tubular shell, wherein cross-flow of air between the first and second chambers of the annular gap is prohibited by the flexible annular seal.

In a further embodiment, the invention can be an apparatus for providing additional radiation shielding to a cask holding high level radioactive materials comprising: a tubular shell extending from an open bottom end to an open top end, the tubular shell having an inner surface that forms a cavity about a longitudinal axis; a plurality of primary apertures forming passageways through the tubular shell and circumferentially arranged in a spaced-apart manner about the tubular shell; a plurality of secondary apertures forming passageways through the tubular shell and circumferentially arranged in a spaced-apart manner about the tubular shell; an annular seal coupled to the tubular shell and extending from the inner surface of the tubular shell; and wherein the secondary apertures are located at an axial height above the annular seal and the primary apertures are located at an axial height below the annular seal.

BRIEF DESCRIPTION OF THE DRAWINGS

FIG. 1 is a top perspective view of a system for containing high level radioactive waste according to one embodiment of the present invention.

FIG. 2 is a bottom perspective view of the system of FIG. 1.

FIG. 3 is a top perspective view of the system of FIG. 1 having a section of the ancillary shield cut-away.

FIG. 4 is a perspective view of the system of FIG. 1 wherein shield is being assembled by stacking a plurality of tube segments.

FIG. 5 is a perspective view of the system of FIG. 1 wherein all of the tube segments have been arranged in a stacked assembly that circumscribes the cask, wherein a section of tube segments are cut-away.

FIG. 6 is close-up view of area VI-VI of FIG. 5.

FIG. 7 is a longitudinal cross-sectional view of the system of FIG. 1 taken along the longitudinal axis A-A, wherein the natural convective cooling of the system is exemplified.

DETAILED DESCRIPTION

Referring first to FIGS. 1-3 and 7 concurrently, a system 1000 for containing high level radioactive waste according to one embodiment of the present invention is illustrated. The exemplified embodiment of the system 1000 generally comprises three major components, a canister 100 that forms a fluidic containment boundary about the high level radioactive materials, a ventilated vertical cask 200 and an ancillary shield 300. In certain embodiments, the invention may be directed solely to the shield 300. In other embodiments, the invention may be directed to the combination of the shield 300 and the ventilated vertical cask 200. In still other embodiments, the invention may be directed to the combination of the canister 100, the ventilated vertical cask 200 and the shield 300.

The canister 100 can be any type of container that forms a fluidic containment boundary about the high level radioactive materials disposed therein and can conduct heat emanating from the high level radioactive materials outwardly through the canister 100. In one embodiment, the canister 100 is engineered for the dry processing of spent nuclear fuel. Suitable canisters can include multi-purpose canisters ("MPCs") and thermally conductive casks that are hermetically sealed for the dry storage of high level wastes, such as spent nuclear fuel. Typically, such canisters comprise a honeycomb grid-work/basket, or other structure, built directly therein to accommodate a plurality of spent fuel rods in spaced relation. An example of an MPC that is particularly suitable for use in the present invention is disclosed in U.S. Pat. No. 5,898,747 to Krishna Singh, issued Apr. 27, 1999, the entirety of which is hereby incorporated by reference. Of course, the invention is not so limited in all embodiments.

When the canister 100 is loaded with high level radioactive materials, the canister 100 is housed within an internal cavity 201 of the cask 200. In the exemplified embodiment, the cask 200 is vertically oriented and extends from a bottom end 202 to a top end 203 along a longitudinal axis A-A. The cask 200 generally comprises a cylindrical body 204 and a removable lid 205. An inner surface 206 of the cylindrical body 204 forms the internal cavity 201 which has an open top end and a closed bottom end.

When the canister 100 is positioned within the cavity 201 of the cask 200, the lid 205 is secured to the top end of the cylindrical body 204 to substantially close the open top end of the internal cavity 201. The transverse cross-section of the internal cavity 201 is designed so that an annular gap 207 exists between the inner surface 206 of the cylindrical body 204 and the outer surface 101 of the canister 100. In the exemplified embodiment, the transverse cross-section of the internal cavity 201 can accommodate no more than one canister 100. However, in alternative embodiments, the internal cavity 201 may be designed to accommodate more than one canister in a side-by-side and/or stacked arrangement.

The annular gap 207 circumscribes the outer surface 101 of the canister and extends along the entire axial length of the canister 100. The annular gap 207 forms an axially extending passageway between a bottom plenum 208 formed between a bottom surface of the canister 100 and a floor of the internal cavity 201 and a top plenum 209 formed between a top surface of the canister 100 and a bottom surface of the lid 205. As discussed in greater detail below, the annular gap 207 allows cool that enters the bottom plenum 208 via the inlet ducts 210 to flow upward along the outer surface 101 of the canister 100 and into the top plenum 209 where it can exit the cask 200 via the outlet ducts 211 as warmed air.

Referring now to FIGS. 2, 3, 6 and 7 concurrently, the cask 200 further comprises a plurality of air inlet ducts 210 at the bottom end 202 of the cask 200. The plurality of inlet ducts 210 are circumferentially arranged in a spaced-apart manner about the cask 200. Each of the air inlet ducts 210 extend from an inlet opening 212 in the sidewall 213 of the cask 200 to the bottom plenum 208 of the internal cavity 201, thereby forming an air-flow passageway between a position external of the cask 200 and a bottom portion of the internal cavity 201. As can be seen, the canister 100 is supported within the cavity 201 so that a bottom surface of the canister 100 is at an axial height above a top of the inlet vents 210 to eliminate radial shine through the inlet ducts 210. In the exemplified embodiment, the cask 200 comprises a total of four inlet vents 210 arranged circumferentially about the cask 200 and spaced apart 90 degrees from each other. Of course, in other embodiments, more or less of the inlet vents 210 can be included in the cask 200 as desired.

The cask 200 further comprises a plurality of outlet ducts 211 at the top end 203 of the cask 200. The plurality of outlet ducts 211 are circumferentially arranged in a spaced-apart manner about the cask 200. Each of the air outlet ducts 210 extend from the top plenum 209 of the internal cavity 201 to an outlet opening 214 in the sidewall 213 of the cask 200, thereby forming an air-flow passageway between a position external of the cask 200 and a top portion of the internal cavity 201. In the exemplified embodiment, the outlet vents 211 are located within the lid 205 of the cask 200. However, in other embodiments, the outlet vents 211 can be located within the cylindrical body 204 of the cask 200. In the exemplified embodiment, the cask 200 comprises a total of four outlet vents 211 arranged circumferentially about the cask 200 and spaced apart 90 degrees from each other. Of course, in other embodiments, more or less of the outlet vents 211 can be included in the cask 200 as desired.

Both the lid 205 and the cylindrical body 204 of the cask 200 are constructed of material(s) that provides both gamma and neutron radiation shielding and are designed to provide the majority of the required radiation shielding (both gamma and neutron). In the exemplified embodiment, the lid 205 and the cylindrical body 204 of the cask 200 are constructed of a combination of carbon steel plates, carbon steel shells and concrete. The main structural function of the cask 200 is provided by its carbon steel components while the main radiation shielding function is provided by the annular plain concrete mass 215 and the disk plain concrete mass 216. The annular plain concrete mass 215 is enclosed by concentrically arranged cylindrical steel shells 217, 218, the thick steel baseplate 219, and the top steel annular plate 220.

The plain concrete masses 215, 216 are specified to provide the necessary shielding properties (dry density) and compressive strength for the cask 200. The principal function of the concrete masses 215, 216 is to provide shielding against gamma and neutron radiation. However, the concrete masses 215, 216 also help enhance the performance of the cask 200 in

other respects as well. For example, the massive bulk of the concrete mass 215 imparts a large thermal inertia to the cask 200, allowing it to moderate the rise in temperature of the cask 200 under hypothetical conditions when all ventilation passages 210, 211 are assumed to be blocked. The case of a postulated fire accident at an ISFSI is another example where the high thermal inertia characteristics of the concrete mass 215 of the cask 200 controls the temperature of the canister 100. Although the annular concrete mass 215 is not a structural member, it does act as an elastic/plastic filler of the inter-shell space.

One example of ventilated vertical cask 200 that can be used in the system 1000 is described above. However, it is to be understood that other ventilated vertical casks can be used in conjunction with the canister 100 and/or the shield 300. For example, an additional example of a suitable cask can be found in U.S. Pat. No. 6,718,000 issued to Krishna Singh, on Apr. 6, 2004, the entirety of which is hereby incorporated by reference. Still another example of a suitable cask can be found in U.S. patent application Ser. No. 12/774,944, filed May 6, 2010, the entirety of which is hereby incorporated by reference.

Referring now to FIGS. 1-3 and 5-7 concurrently, the exemplified embodiment of the ancillary shield 300 will be described in greater detail. The shield 300 is a sleeve-like structure that is designed to slidably fit over a ventilated vertical cask, such as the cask 200, to provide additional radiation shielding and missile protection. The shield 300 is intended to be provided to circumscribe the cask 200 once it is at rest on a support surface, such as the ground. It is to be further understood that the shield 300, in and of itself, is a novel device and can constitute an embodiment of the invention independent of the cask 200 and canister 100.

The shield 300 is a free-standing structure that circumscribes the cask 200 and provides shielding blockage over the entire height of the cask 200, as necessary depending on the specific applications. The shield 300 is effective in blocking radiation from the inlet and outlet ducts 210, 211 of the cask 200 (locations of relatively high fluence), without impeding air ventilation entering, exiting or inside the cask (FIG. 7). In order for the shield 300 to get down to very, very low dose rates, the shield 300 may be formed of material(s) so as to impart both neutron and gamma blockage capability. In certain embodiments, the shield 300 may be formed of steel, lead, concrete and/or an appropriate neutron absorber resin (such as Holtite), depending on the allowable thickness and type of radiation to be blocked (steel and concrete for both gamma and neutron, resin for neutrons, and lead for gamma).

The shield 300 generally comprises a tubular shell 301 and an annular top plate 302 coupled to a top end 303 of the tubular shell 301. The shield 300 (and the tubular shell 301) extends along the longitudinal axis A-A from a bottom end 304 to a top end 303. The bottom end 304 of the shield 300 is open, comprising a bottom opening 305 through which the cask 200 can be inserted into an internal cavity 306 of the shield 300. The top end 303 of the shield 300 is also open, comprising a top opening 307, which is also the central opening of the annular ring plate 302.

The shield 300 has a vertical height that is greater than the vertical height of the cask 200. More specifically, the shield 300 has a first axial height, measured from the bottom end 304 of the shield 300 to the top end 303 of the shield 300 along a line parallel to the longitudinal axis A-A. Similarly, the cask 200 has a second axial height, measured from the bottom end 202 of the cask 200 to the top end 203 of the cask 200 along a line parallel to the longitudinal axis A-A. The first height is greater than the second height.

The annular ring plate **302** is coupled to the top end **303** of the shield **300** and extends radially inward therefrom, terminating in an inner edge **308** that defines the central opening **307**. The annular ring plate **302** extends radially inward from the tubular shell **301** beyond the sidewall **213** of the cask **200**. As such, the central opening **307** has a transverse area that is less than the transverse cross-sectional area of the cask **200** in the exemplified embodiment. The annular ring plate **302** is axially spaced a distance from a top surface **220** of the lid **205** of the cask **200** so that an air flow passageway exists between the central opening **307** and the annular space **310** (discussed below). The annular ring plate **302** blocks off skyshine radiation emanating at an oblique angle.

When the shield **300** is positioned, as illustrated in FIGS. 1-3 and 5-7, the tubular shell **301** circumferentially surrounds the cask **200**. Because the inner diameter of the tubular shell **301** is greater than the outer diameter of the cask **200**, an annular gap **310** is formed between the inner surface **311** of the tubular shell **301** and the sidewall **213** of the cask. The annular gap **310** extends along the entire axial height of the cask **301** (i.e., from the bottom end **202** of the cask **200** to the top end **203** of the cask **200**). The annular gap **310** also circumscribes the cask **200**.

The tubular shell **301** further comprises a plurality of the primary apertures **312** at the bottom end **304** of the shield **300**. The primary apertures **312** form radial passageways through the tubular shell **301**. The primary apertures **312** are circumferentially arranged in a spaced-apart manner about the tubular shell **301**. The circumferential location of the primary apertures **312** is selected so that the primary apertures **312** are radially offset from the inlet openings **212** of the inlet vents **210** of the cask **200**. As mentioned above, the inlet openings **212** of the inlet vents **210** present a particularly vulnerable source of radiation exposure. Thus, by radially offsetting the primary apertures **312** from the inlet openings **212** of the inlet ducts **210** of the cask **200**, portions **301A** of the structure of the tubular shell **301** are radially aligned with the inlet openings **212** of the inlet ducts **210** of the cask **200**, thereby minimizing environmental dose.

In the exemplified embodiment, the primary apertures **312** are notches formed in the bottom edge of the tubular shell **301**. However, the invention is not so limited and in other embodiments, the primary apertures **312** may be formed as prismatic openings. Furthermore, in the exemplified embodiment, the shield **300** comprises a total of four primary apertures **312** arranged circumferentially about the tubular shell **301** and spaced apart 90 degrees from each other. Of course, in other embodiments, more or less of the primary apertures **312** can be included in the shield **300** as desired.

The tubular shell **301** also comprises a plurality of the secondary apertures **313** at or near the bottom end **304** of the shield **300**. The secondary apertures **313** form radial passageways through the tubular shell **301**. The secondary apertures **313** are circumferentially arranged in a spaced-apart manner about the tubular shell **301**. In the exemplified embodiment, the secondary apertures **313** are narrow elongated slits. However, the invention is not so limited and in other embodiments the secondary apertures **313** may take on other shapes.

In the exemplified embodiment, the secondary apertures **313** are located at first axial height from the bottom edge of the tubular shell **301** while the primary apertures **312** are located at a second height from the bottom edge of the tubular shell **301**, wherein the second height is different than the first height. In the specific embodiment exemplified, the first axial height is greater than the second axial height. Of course, the invention will not be so limited in all embodiments.

The system **1000** further comprises an air flow barrier **314** extending between the tubular shell **301** and the sidewall **213** of the cask **200**. The air flow barrier **314** separates the annular gap **310** into: (1) a first chamber **310A** that forms a passageway between the primary apertures **312** of the tubular shell **301** and the inlet vents **310** of the cask; and (2) a second chamber **310B** that forms a passageway between the secondary apertures **313** of the tubular shell **301** and the opening **307** at the top end of the shield **300**. The air flow barrier **314** prohibits cross-flow of air between the first and second chambers **310A**, **310B** of the annular gap **310** so that two distinct cool air inlet flow pathways are formed in the system **1000**. The air flow barrier **314** can prohibit cross-flow of air between the first and second chambers **310A**, **310B** of the annular gap **310** by itself or in conjunction with a flange on the cask and/or tubular shell.

In the exemplified embodiment, the air flow barrier **314** is coupled to and extends radially inward from the inner surface **311** of the tubular shell **301** and comes into surface contact with the sidewall **213** of the cask **200**. More specifically, in the exemplified embodiment, the air flow barrier **314** is an annular plate. In such an embodiment, the first chamber **310A** is a lower chamber while the second chamber **310B** is an upper chamber. In this embodiment, the secondary apertures **313** are located at an axial height above the air flow barrier **314** and the primary apertures **312** are located at an axial height below the air flow barrier **314**.

In order to ensure a proper seal and/or reduce interference during installation onto a cask **200**, the air flow barrier **314** may be formed so as to be flexible in certain embodiments of the invention. For example, in some embodiments, the air flow barrier **314** may be formed of an elastomeric material, such as rubber or the like. In other embodiments, the flexibility of the air flow barrier **314** may be achieved by designing its thickness suitably thin so as to bend easily. Of course, the invention is not so limited and in other embodiments of the invention the air flow barrier **314** may be a rigid structure.

Referring now to FIGS. 4-6 concurrently, it can be seen that the tubular shell **301** of the shield **300**, in the exemplified embodiment, is formed by a plurality of tube segments **317** arranged in a stacked-assembly so that a surface contact interface **320** is formed between a top edge **321** and a bottom edge **322** of adjacent tube segments **317**.

When the tubular shell **301** is formed by tube segments **317**, it may be preferred in certain instances to provide a collar **319** at each surface contact interface **320** that extends above and below the surface contact interfaces **320**. In certain embodiments, the collars **319** may be integrally formed with the tube segments **317** and protrude from the top and/or bottom edges **321**, **322**. In other embodiments the collars **319** may be separate structures. The collars **319** prevent radiation escape through the surface contact interfaces **320**. The collars **319** also prohibits the adjacent tube segments **317**, **318** from becoming axial misaligned while allowing the adjacent tube segments **317**, **318** to be separated from one another through relative movement between the adjacent tube segments **317**, **318** in the axial direction. However, all tube segments **317** may be mechanically interconnected in the axial direction, if required (not shown in the figure).

In the exemplified embodiment, the primary apertures **312** and the secondary apertures **313** are located in a bottom-most tube segment **318** of the stacked assembly. Further, the air flow barrier **314** is also coupled to the bottom-most tube segment **318** of the stacked assembly in the exemplified embodiment. Of course, the invention is not so limited in all embodiments. Moreover, in certain embodiments, the tubular shell **301** could be a single unitary structure. However, by

forming the shield **300** from a plurality of short tube segments **317**, the shield **300** is installable without raising the cask **200** or the shield **300** to excessive heights (to protect against heavy load drop scenarios).

Further, each of the tube segments **317** comprise a plurality of spacers **315** circumferentially arranged in a spaced-apart manner about the tube segment **317** and protruding from an inner surface **311** of the tube segment **317**. The spacers **315** maintain the annular gap **310** by ensuring proper relative positioning between the cask **200** and the shield **300**. Each of the spacers **315** further comprise a means for facilitating engagement and lifting of the tube segment **317**. In the exemplified embodiment, the lifting means is a hole **316**. However, in other embodiment, the lifting mean can be a hook, a tang, a protuberance, a latch, a bracket, a clamp, a threaded surface, and/or combinations thereof. Thus, the spacers **315** can also be thought of as lifting lugs.

In addition to the shield **300** serving as a radiation mitigation device, the shield **300** also largely eliminates the insulation heat flux on the cask **200**, thus giving the system **1000** a heat load dividend of about 3 kilowatts. The shield **300**, if properly sized, can boost the heat rejection rate from the system **1000** even more. It is recognized that the secondary openings **313** are provided to allow air to enter the upper chamber **310B** of the annular gap **310**. The ventilation air will help cool the external surface of the cask **200**, thereby improving the heat rejection rate from the system **1000**. Thus, if the annular gap **310** is properly sized then the overall heat rejection from the system **1000** will actually be enhanced. The size (width) of the annular gap **310** must be set in the narrow range that maximizes the rate of air up flow. Maximizing the air ventilation rate will allow maximum thermal-hydraulic advantage to be derived from the shield **300**. The optimal gap size will depend on a number of parameters including the system heat load and cask height. Therefore it can not be set down herein a priori. However, calculations show that the optimal gap in a typical situation will lie in the range of 1 to 4 inches. The shield **300** also acts to provide a barrier against blockage of inlet vents **210** of the cask **200** by snow accumulation. Furthermore, because most of the environmental radiation dose emitted by a vertical ventilated cask, such as cask **200**, comes from the casks located at the periphery, the shield **300** may be used selectively on those casks **200** where dose emission needs to be blocked to meet a specified target dose limit in the vicinity of the ISFSI (such as the §72.104 & 72.106 dose limits at the site boundary in the U.S.).

A method of containing high level radioactive materials according to one embodiment of the present invention using the system **1000** will be described. In an initial sequence, the canister **100** is transferred from a transfer cask (not illustrated) into the vertical ventilated cask **200**. An example of this transfer procedure is set forth in U.S. Pat. No. 6,625,246 to Krishna Singh, issued Sep. 23, 2003, the entirety of which is hereby incorporated by reference.

Once the canister **100** is in the cask **200** and the lid **205** is secured to the cylindrical body **204**, natural convective cooling (via the chimney-effect) of the canister **100** is achieved. Specifically, heat emanating from the canister **100** warms the air within the annular gap **207**. The warmed air within the annular gap **207** rises as result of being warmed, thereby gathering in the top plenum **209** and exiting the cask **200** via the outlet vents **211**. The outflow of the warmed air through the outlet vents **211** causes a siphon effect at the inlet openings **212** of the inlet vents **210**, thereby drawing cool air that is external to the cask **200** into the bottom plenum **208** via the inlet vents **210** where the cycle is repeated.

At this stage, the cask **200** is free standing and supported on a support surface, which can be the ground or engineered surface outside or within a building. The cask **200** is vertically oriented so that the longitudinal axis A-A extends substantially vertically.

Once the cask **200** is in position, the shield **300** is installed to circumscribe the cask **200** as described below. The bottom-most tube segment **318** is first positioned above the cask **200** using a crane connected to the spacers **315**. The bottom most tube segment **318** is then lowered so that the cask **200** extends through the bottom opening **305** of the shield **300**. The bottom-most tube segment **318** continues to be lowered until it rests atop the support surface as illustrated in FIGS. 4 and 7. The bottom-most tube segment **318** is rotationally arranged so that the primary apertures **312** are radially offset from the inlet openings **212** of the inlet vents **210** of the cask **200**. The additional tube segments **317** are then lowered in the same manner as described above for the bottom-most tube segment **318** and are stacked atop the bottom-most segment **318** (and previously positioned tube segments **317**) to form a stacked assembly that extends the entire height of the cask **200**, thereby forming the tubular shell **301**.

Once the tubular shell **301** is complete, it circumscribes the cask **200** as described above. The annular ring plate **302** is then positioned atop the tubular shell **301** and couple thereto. If necessary the adjacent tube segments **317** and the annular ring plate **302** can be secured together via additional mechanical means if necessary to prohibit separation in the axial direction. For example, welding, fasteners, interference fits, or the like can be incorporated as necessary.

At this point, the shield **300** is free standing structure supported on the support surface. The annular gap **310** between the shield **300** and the cask **200** is maintained as discussed above. When fully assembled, cool air enters the system **1000** as two separate and distinct fluid flow paths. The first flow path of cool air is siphoned into the system **1000** via the primary apertures **312**. After entering the primary apertures **312**, this cool air enters the first chamber **310A** where it is drawn into the bottom plenum **208** of the internal cavity **201** of the cask **200** via the inlet ducts **210**. This cool air then undergoes the flow discussed above for the cask **200**. The second flow path of cool air is siphoned into the system **1000** via the secondary apertures **313**. After entering the secondary apertures **313**, this cool air enters the second chamber **310B** where it is heated by heat emanating from the sidewall **213** of the cask **200**. As this cool air is warmed, it rises within the second chamber **310B**.

The warmed air of the first flow path that exits the outlet vents **311** of the cask converges with the warmed air of the second air flow path that rising within the second chamber **310B**. The converged warm air then exist the system **1000** via the top opening **307**. By converging the two air flow paths in the system **1000**, the volume of outgoing warmed air flow is increased, thereby contributing a greater siphon effect at the primary and secondary apertures **312**, **313**.

While the invention has been described and illustrated in sufficient detail that those skilled in this art can readily make and use it, various alternatives, modifications, and improvements should become readily apparent without departing from the spirit and scope of the invention.

What is claimed is:

1. A system for containing high level radioactive materials comprising:
 - a cask having an internal cavity for holding high level radioactive materials and comprising an inlet vent for the internal cavity at a bottom end of the cask and an outlet vent for the internal cavity at a top end of the cask;

11

a tubular shell positioned to circumferentially surround the cask so that an annular gap exists between the tubular shell and a sidewall of the cask, the tubular shell including a first air flow inlet and a second air flow inlet; and an air flow barrier placed within the annular gap to separate the annular gap into a first chamber and a second chamber, wherein:

a first air flow into the first air flow inlet passes through the first chamber and into the inlet vent of the cask, a second air flow into the second air flow inlet passes through the second chamber and to an opening at the top end of the tubular shell, and the air flow barrier is positioned to prohibit cross-flow of air between the first chamber and the second chamber.

2. The system of claim 1 wherein the air flow barrier is an annular plate extending from the sidewall of the cask to an inner wall of the tubular shell.

3. The system of claim 1 wherein the tubular shell comprises more than one first air flow inlet arranged in a spaced-apart manner about the tubular shell and more than one second air flow inlet arranged in a spaced-apart manner about the tubular shell.

4. The system of claim 1 wherein the first air flow inlet is a notch in a bottom edge of the tubular shell.

5. The system of claim 1 wherein the inlet vent of the cask is radially offset from the first air flow inlet.

6. The system of claim 1 wherein the outlet vent of the cask opens into the second chamber of the annular gap.

7. The system of claim 1 wherein the tubular shell comprises a plurality of tube segments arranged in a stacked-assembly.

8. The system of claim 7 wherein the primary aperture and the secondary aperture are located in a bottom-most tube segment of the stacked assembly.

9. The system of claim 8 wherein the air flow barrier is coupled to the bottom-most tube segment of the stacked assembly.

10. A system for containing high level radioactive materials comprising:

a cask extending along a longitudinal axis and having an internal cavity for holding high level radioactive materials, the cask comprising a plurality of inlet vents at a bottom end of the cask for allowing cool air to enter the internal cavity and a plurality of outlet vents at a top end of the cask for allowing heated air to exit the internal cavity;

a tubular shell extending from a bottom end to a top end, the tubular shell positioned to circumferentially surround the cask in a spaced apart manner so that an annular gap exists between the tubular shell and a sidewall of the cask, the tubular shell comprising a plurality of first air flow inlets and a plurality of second air flow inlets; and an annular seal placed within the annular gap to separate the annular gap into a first chamber and a second chamber, wherein:

air flowing into one of the first air flow inlets passes through the first chamber and into one of the inlet vents of the cask,

air flowing into one of the second air flow inlets passes through the second chamber and to an opening at the top end of the tubular shell, and

the annular seal is positioned to prohibit cross-flow of air between the first chamber and the second chamber.

12

11. The system of claim 10, wherein the first air flow inlets are circumferentially arranged in a spaced-apart manner about the tubular shell, and the second air flow inlets are circumferentially arranged in a spaced-apart manner about the tubular shell.

12. The system of claim 10, wherein each of the inlet vents comprise an inlet opening in the sidewall of the cask, and each of the first air flow inlets is radially offset from the inlet openings of the inlet vents.

13. The system of claim 10, wherein each of the outlet vents opens into the upper chamber of the annular gap.

14. The system of claim 10, wherein the tubular shell comprises a plurality of tube segments arranged in a stacked-assembly.

15. The system of claim 14, wherein each of the tube segments comprises a plurality of spacers protruding from an inner surface of the tube segment and circumferentially arranged in a spaced-apart manner.

16. The system of claim 10, wherein the annular seal comprises a flexible annular seal.

17. A method of containing high level radioactive materials comprising:

a) positioning a cask on a support surface, the cask having an internal cavity containing high level radioactive materials and comprising an inlet vent for the internal cavity at a bottom end of the cask and an outlet vent for the internal cavity at a top end of the cask; and

b) sliding a tubular shell over the cask, the tubular shell circumferentially surrounding the cask so that an annular gap exists between the tubular shell and a sidewall of the cask, the tubular shell including a first air flow inlet, a second air flow inlet, and an air flow barrier configured to extend between the tubular shell and the sidewall of the cask, wherein:

the airflow barrier separates the annular gap into a first chamber and a second chamber,

a first air flow into the first air flow inlet passes through the first chamber and into the inlet vent of the cask,

a second air flow into the second air flow inlet passes through the second chamber and to an opening at the top end of the tubular shell, and

the air flow barrier is positioned to prohibit cross-flow of air between the first chamber and the second chamber.

18. The method of claim 17, wherein:

cool air entering the first air flow inlet is drawn into the internal cavity, is warmed within the internal cavity by heat emanating from the high level radioactive materials, and exits the internal cavity via the outlet vent as warmed air;

cool air entering the second air flow inlet is drawn through the second chamber, is warmed by heat emanating from the cask, and rises within the second chamber as warmed air; and

the warmed air exiting the outlet duct and the warmed air rising within the second chamber converge and exit the tubular shell via the opening at the top end of the tubular shell.

19. The method of claim 17 wherein step b) comprises sliding a plurality of tube segments over the cask and stacking the tube segments to form a stacked assembly that forms the tubular shell.

* * * * *